

THIS DRAWING IS THE SOLE PROPERTY OF AK INDUSTRIES INC.

NOTES:

- 1) BASIN LENGTHS AND DEPTHS ARE INSIDE DIMENSIONS
- 2) BASIN COLOR IS GREEN
- 3) ALL DIMENSIONS ARE +/- 1/8"

PUMP INFORMATION:

- TYPE:**
- SUMP
 - GRINDER
 - NON-CLOG
- MODEL:** _____

DISCHARGE PIPE

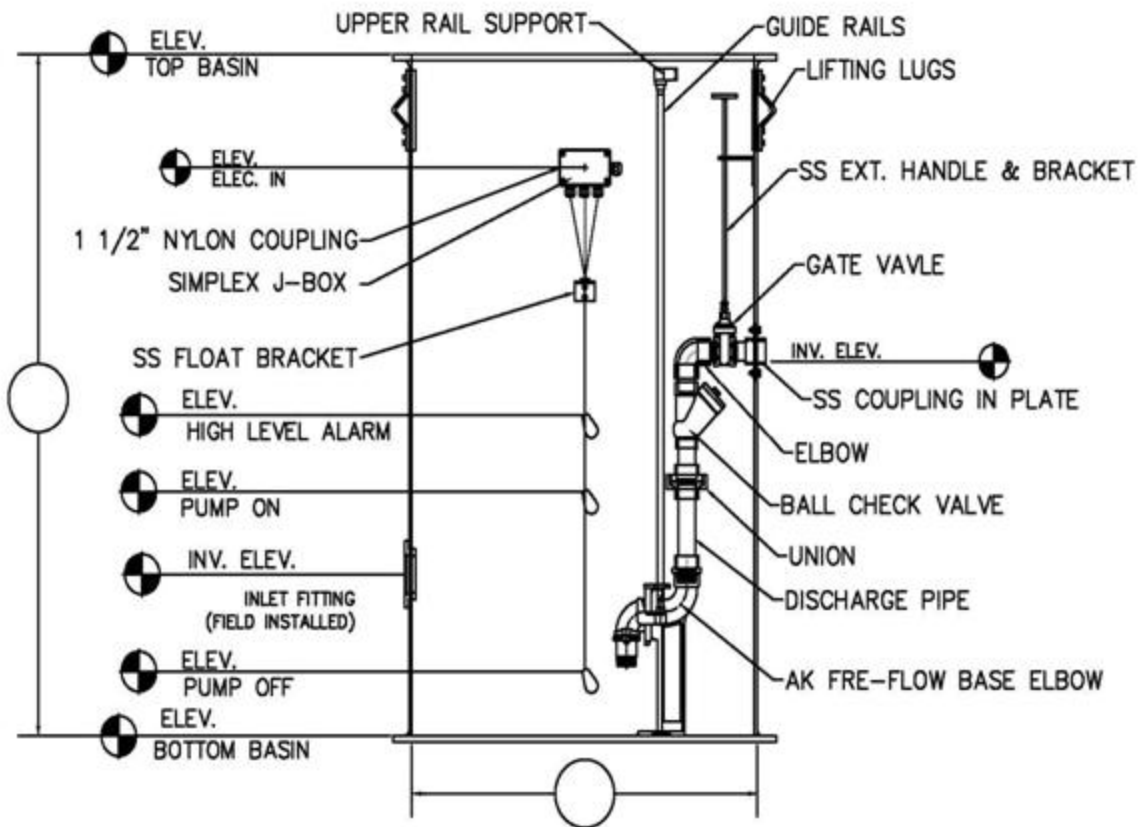
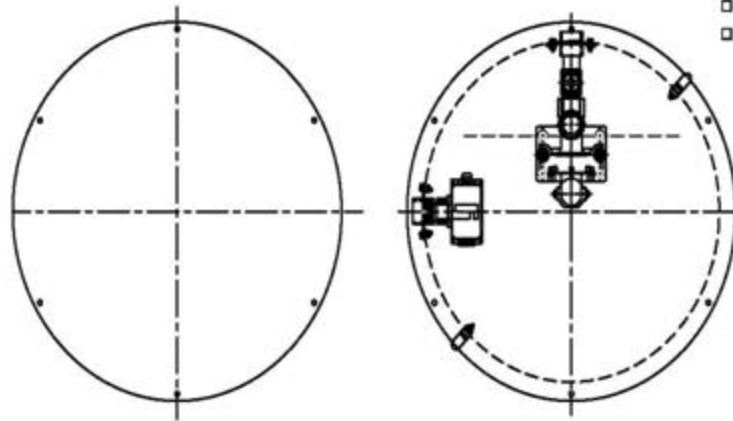
- 304 STAINLESS STEEL
- SCH40 GALVANIZED
- SCH 80 PVC

GUIDE RAILS:

- 304 STAINLESS STEEL
- GALVANIZED

COVER SPECIFICATIONS

- STEEL HINGED DOOR
- ALUMINUM HINGED DOOR
- FRP HINGED DOOR
- SOLID FIBERGLASS
- 24" CO-POLYMER



FOR SUBMITTAL USE ONLY. NOT A PRODUCTION DRAWING