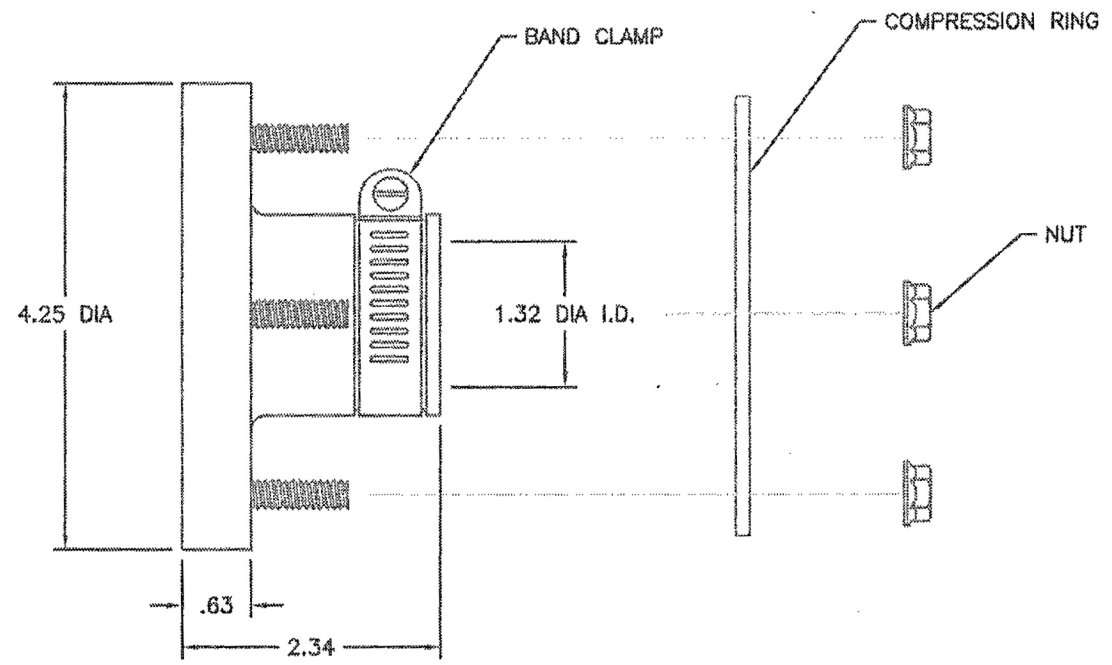


REVISIONS			
REV	DESCRIPTION	DATE	APPROVED



UNLESS OTHERWISE SPECIFIED: DIMENSIONS ARE IN INCHES TOLERANCES			
DECIMALS XX ± .010	ANGULAR ± 0.5°		
DO NOT SCALE DRAWING		1" FLEXIBLE ENTRY BOOT for RIGID CONDUIT	
DRAWN	DATE 9/30/99	SIZE B	CAD FILE FEB-3100-Z
CHECKED		DWG NO.	FEB-3100-Z
APPROVED	10/8/99	SCALE 1:1	MAT'L: N/A
		SHEET	1 of 1